



POLMON WI-CLOCK is a handheld, portable, battery operated synchronized digital clock. It is the perfect solution for a wide range of applications where accurate, synchronized time is required. Wi-Clock is synchronized with UTC via GPS or with Polmon master clock at regular intervals. It works on an Internal, highly accurate temperature compensated RTC when synchronization with source is not available. It is also used for range, signal strength testing and setting up of Polmon clock network. Wi-Clock's toughened plastic enclosure is designed for pharma clean room applications, laboratory applications etc.

#### Features

- Accuracy in standalone mode:  $\pm 2\text{min/year}$
- GPS/Polmon master Clock synchronization
- Hand- held, portable, battery operated device
- Auto/Manual synchronization
- Programmable synchronization period
- Works in stand- alone mode when source is not available
- Ultralow power graphical LCD
- Programmable time format (HH:MM/HH:MM:SS)
- 3000 hrs, battery life
- Battery status on the display and low battery indication
- Shows both date and time
- Shows last synchronization status

#### Applications

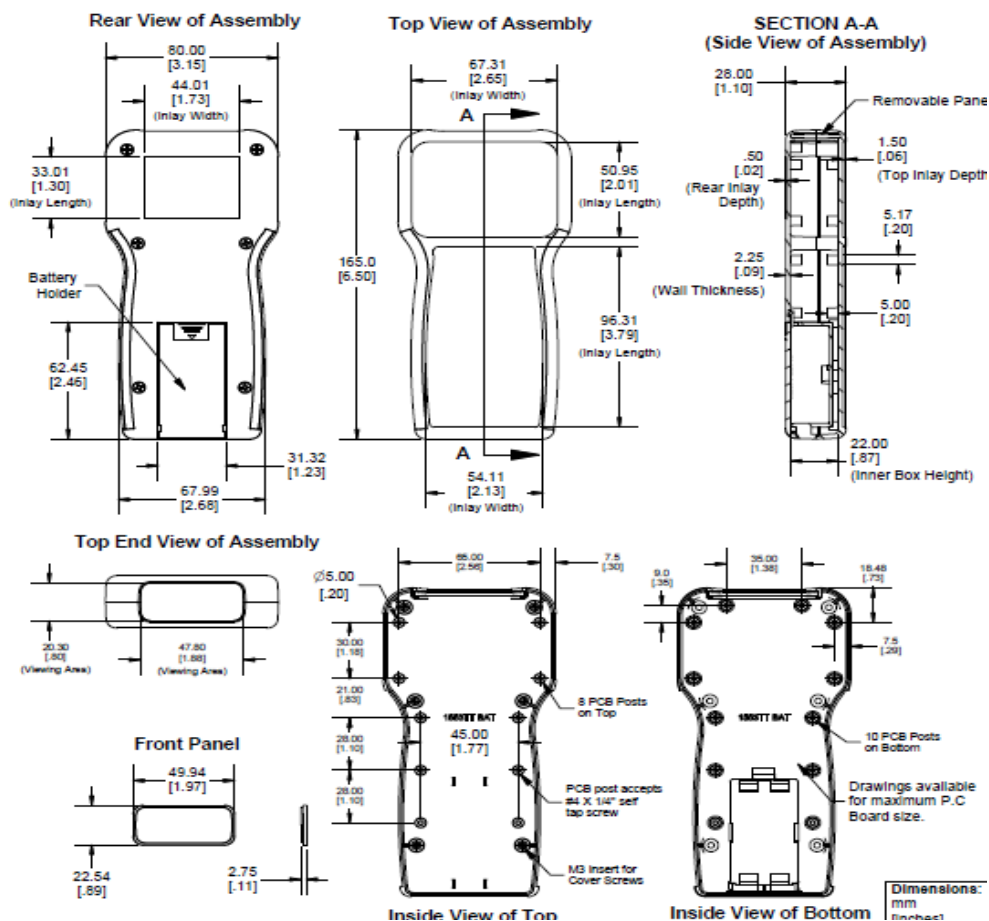
- FDA and MHRA time stamping compliance
- Computer systems time Validation
- Wall Clock validation
- HMI/PLC time validation
- Remote to Polmon Clocks

# Specifications

Technical			
Model No	TM680H-R-B	TM680H-R-G	TM680H-R-P
Display	2.2" x 1.6" Graphic LCD Display		
Time Synchronization Source	Programmable (GPS and Polmon Master)	GPS	Polmon Master
Synchronization Interval	Programmable between 1 min to 72 hours		
Communication	Wireless		
Accuracy	In Synchronization: GPS Time: 200msec/Server Time: 360msec Stand-alone: +/-2min/year		
Time Format	24 hrs		
Power Supply			
Input Supply	2 x 1.5V AA (Recommended make: Energizer Lithium)		
RF Communication			
Frequency	GPS: 1575±2.5MHz Polmon Master: 865MHz to 867MHz	1575±2.5MHz	865MHz to 867MHz
Distance	1500 Meters Line of Sight		
Antenna type	Dipole		
Antenna Fixing	Instrument Plug type SMA end		
Physical			
Dimension	165mm x 80mm x 28mm		
Enclosure material	Toughened FR ABS Plastic		
Weight	200g approx.		
Application	Safe area		
Environmental			
Operating temperature	10-50°C		
Humidity	10 – 95% RH, Non-condensing		

Ordering Information for TM680H		
TM680H	X	X
Model No.	External Enclosure	Time Synchronization source
TM680H	R – NFLP	P – POLMON Master
		G – GPS
		B – POLMON Master and GPS

## MECHANICAL DRAWING OF TM680H



Head Office: POLMON INSTRUMENTS PVT.LTD  
 (AN ISO 9001: 2015 Certified Company)  
 "POLMON HOUSE" Nizampet Road, Kukatpally, Hyderabad-500085  
 Ph No: 040-23053046, 23057308  
 e-mail: polmon@polmon.com URL: www.polmon.com

All specifications are subject to change without notice.  
 Doc. Ref. TM680H/131121/V1.0